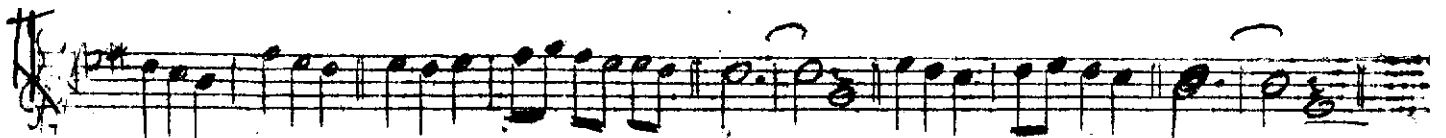
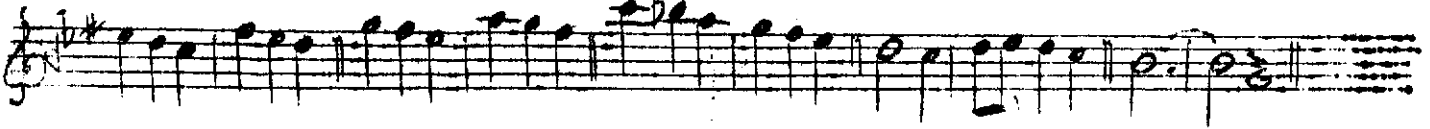
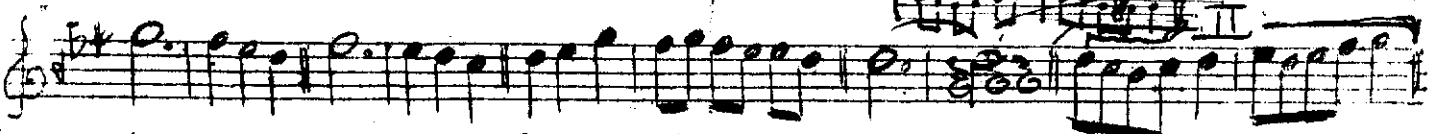


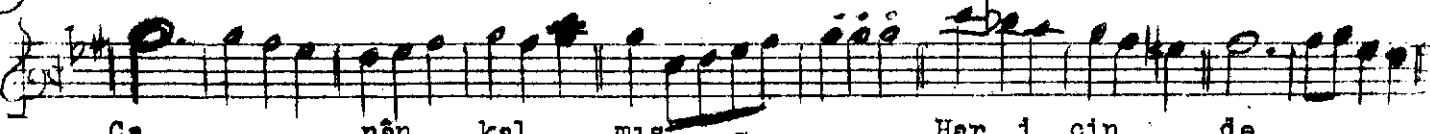
----- A r a n a ğ m e -----



Gör düm ki sar mış ya , ri min



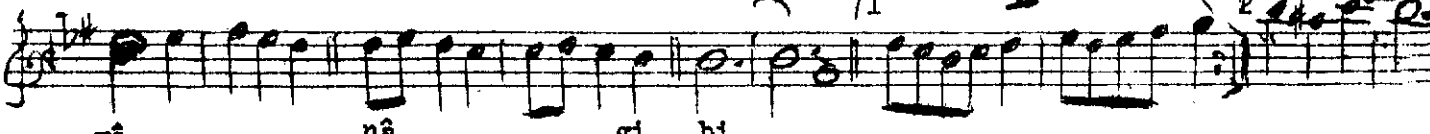
et ra fı nı ağ yar -- S a z --



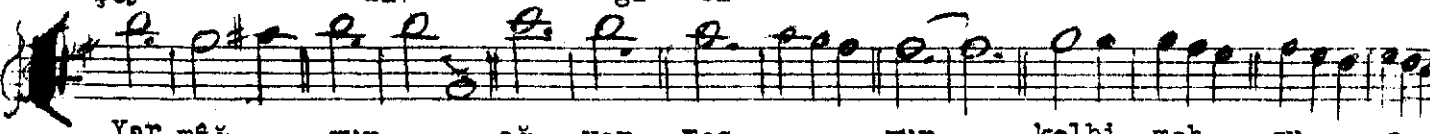
Ca nân kal mış -- S a z -- Har i çin de
Ey le dim fer yâd o dem de



gonce i ra nâ gi bi Gonca i
Bülbü lî şey da gi bi Bülbü lî



ra şey nâ gi bi
şey den gi bi



Yar mâğ rur ağ yar mes rur kalbi mah zu



num ki rak

Gördüm ki sarmış yârımın etrafını ağyar
Cânan kalmış hâr içinde gonce-i ranâ gibi

Yar mağrur, ağyar mesrur kalbi mahzûnunu kırık
Eyledim feryad o demde bülbül-i sorân gibi

İsmail Kocaeli